



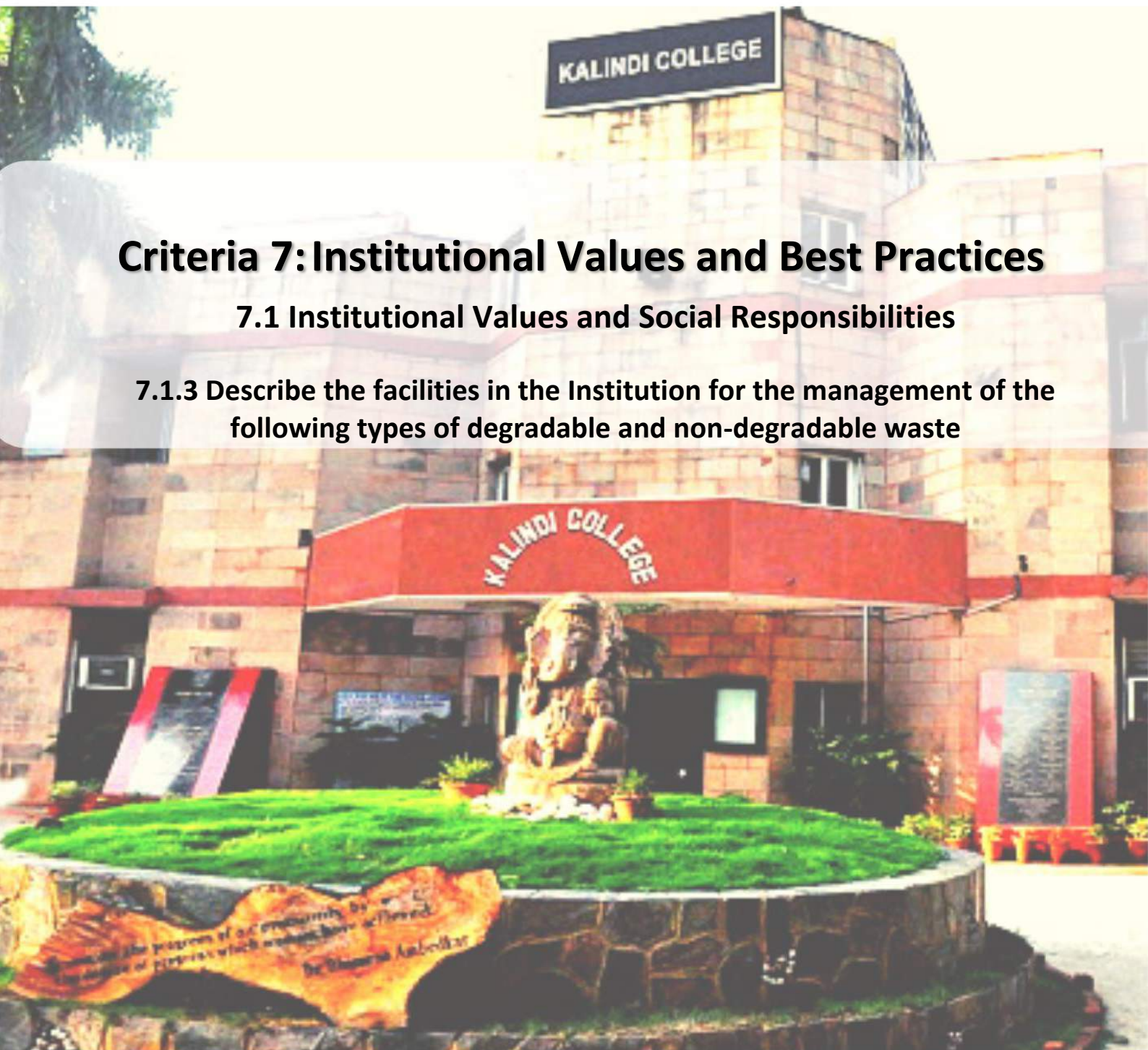
KALINDI COLLEGE

NAAC Accredited with Grade 'A'
(University of Delhi)

Criteria 7: Institutional Values and Best Practices

7.1 Institutional Values and Social Responsibilities

7.1.3 Describe the facilities in the Institution for the management of the following types of degradable and non-degradable waste



Submitted to
National Assessment and
Accreditation Council (NAAC)
(2016-21)

GREEN AUDIT
KALINDI COLLEGE, UNIVERSITY OF DELHI



Prepared by
Environment Pollution Analysis Lab, Bhiwadi, Alwar, Rajasthan

CONDUCTED BY
ENVIRONMENT POLLUTION ANALYSIS LAB (EPAL),
BHIWADI, ALWAR, RAJASTHAN

DECEMBER, 2021

TABLE OF CONTENTS	
ACKNOWLEDGEMENT	
DISCLAIMER	
CONTEXT OF GREEN AUDIT	05-06
EXECUTIVE SUMMARY	07-10
OVERVIEW OF INSTITUTE	11-12
WASTE MINIMIZATION AND RECYCLING	13-14
GREEN CAMPUS BIODIVERSITY	15-16
ENERGY CONSERVATION	17-18
WATER CONSERVATION	19-20
CARBON FOOTPRINT	21-23
CLEAN AIR	24-25
ENVIRONMENTAL LEGISLATIVE	26-27
SOCIAL WELFARE	28
BEST PRACTICES	29
RECOMENDATION & CONCLSIONS	30
<i>ANNEXURE REPORT ON MAJOR SEVEN POINT ENVIRONMENTAL TARGETS, PHOTOGRAPHS OF ENVIRONMENT CONSIIOUSNESS BY THE KALINDI COLLEGE</i>	31-156

GREEN AUDIT or ENVIRONMENTAL AUDIT

The following sectors or areas of Environmental-Green practices are being followed by Kalindi College is as below:

I. WASTE MINIMIZATION AND RECYCLING

1.	Does your college generate any waste? If so, what are they?	Yes, Solid waste Canteen waste, paper, plastic, Horticulture Waste etc. However, managed through MSW Rules, 2016 with the help of Municipal Corporations. (ANNEXURE-I)			
2.	What is the approximate amount of waste generated per day? (in Kilograms/month) (approx.)	Bio-degradable	Non-Biodegradable	Hazardous	Electronics waste, Chemical discards & Others
		Total = 760 kg per year	Not Quantified	Not Quantified	Not Quantified
3.	How the waste generated in the college is managed?	<ol style="list-style-type: none"> 1. Composting 2. Recycling 3. Reusing 4. Segregation 5. Incineration. (ANNEXURE-I)			
4.	Do you use recycled paper in college?	Yes, The college has paper recycling machine for the recycling purpose. (ANNEXURE-I)			
5.	Do you use reused paper in college?	Yes, recycle papers are used for various institutional activities such as notifications, Official communication, study materials etc. (ANNEXURE-I)			
6.	How would you spread the message of recycling to others in the community? Have you taken any initiatives? If yes, please specify.	Done in locality for awareness of resource crunches. (ANNEXURE-I)			
7.	Can you achieve zero garbage in your institute? If yes, how?	Possible through waste management plan. (ANNEXURE-I)			
8.	How do you manage Hazardous and E-waste?	Possible through Authorised Vendors (ANNEXURE-I)			
9.	Is there any awareness programme on waste minimization is being carried out by your college?	Yes, Committee have been formed on each category of waste and College is periodically carried out awareness programmes. (ANNEXURE-I)			

10.	Whether your college staff and students aware about MSW, E-Waste, Hazardous Waste Rules. 2016, 2011, 1989, respectively?	Yes the College staff and students are well aware about these Rules. (ANNEXURE-I)
------------	---	--

The college is striving to limit waste creation in all possible ways, including reducing the procurement of new materials, reusing and recycling existing materials, and, if this is not possible, disposing of garbage in a manner that has the least environmental impact. The usage of plastic is prohibited in the campus. The Waste containers/Dustbins are positioned where they are needed. The solid waste from canteens, classrooms, washrooms, offices, laboratory, garden are being disposed and Hazardous and E-waste has been handled, transported, and disposed by the authorized vendors. Further the hazardous chemicals and toxic hygienic compounds will be used as little as possible at the college as the final stage in solid waste reduction and a way to turn waste into a resource, the college had committed to a comprehensive recycling programme. The regular programme of segregation, recycling and reuse its solid wastes, as well as build a waste-to-composting and bio-mass resource recovery is being done. The college is engaged in the 3Rs (Reduce, Reuse and Recycle) of environmental friendliness in a systematic way. Nevertheless, the college staff is collecting and recycling paper waste generated in the campus in collaboration with scrap merchants. Furthermore, the college is developing a technology-centric educational and administrative strategy to reduce solid waste.

Finally, the college is supporting the digitization of attendance and internal assessment records to reduce the consumption of paper. Also, the college is updating library's E-books and E-Journals collection to reduce the need for printed books. Encourage students and teachers to utilize email to submit assignments. Also, take steps to raise student knowledge about food waste and strategies for reducing it. The college is minimizing the usage of packaged foods, as well as promoting the habit of reusing and recycling non-biodegradable items. The college is organizing solid waste management workshops for students. Taking into E-WASTE MANAGEMENT, the college assures that its technological use and e-waste output have no negative influence on the environment. The college intends to work toward the following goals:

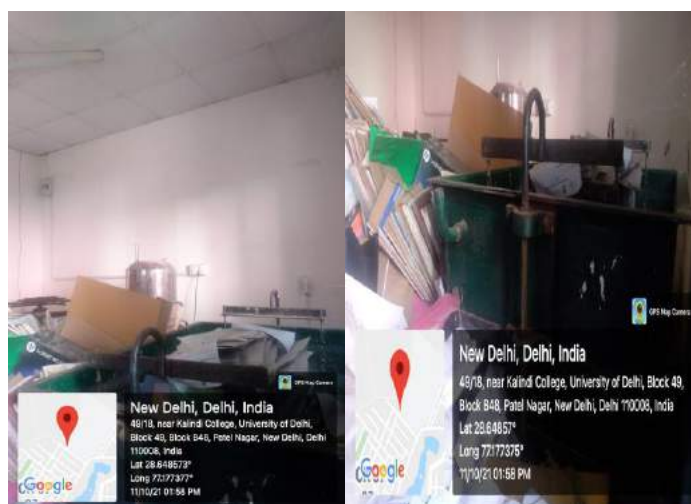
- 1) More arrangements for the disposal of institutional e-waste;
- 2) Working with e-waste recycling firms to recycle electronic waste;

	Metal Scrap Trade Corporation (MSTC) and is under the process of auctioning e-waste, solid waste etc.
Chemical Waste (paints, cleaning materials etc.) used in campus maintenance	Chemical waste generated in the campus is stored in specific container and handed over to waste management agencies

Summary of specific waste recycling strategy in the college campus

1. Paper Recycling Machine, Kalindi College

College is equipped with a paper recycling machine. Paper used for various academic purposes are recycled for secondary purposes.



2. Composting-

A composting machine is present in the Garden area that effectively uses organic plant waste to produce manure which is free of any chemical fertilizer, which is then used as biofertilizers in the college gardens.



- Vermicomposting** : A vermicompost pit is present in the Herbal Garden that effectively uses organic plant waste to produce manure which is free of any chemical fertilizer, which is then used as biofertilizers in the college gardens. Due to Covid pandemic and non functionality of paper recycling machine (incapability to maintain it during lockdown) at present college is not using recycled paper.



4) Biological Waste disposal :

- a) College has installed color coded garbage but they are not marked wet and dry except one which is kept in the front of the Zoology lab.



- b) College has installed sanitary pad incineration unit



5) Waste wealth programme:

The Library, Kalindi College has signed an agreement with JAAGRUTI under its 'Paper Waste Management and Recycling Initiative'. This initiative is a non-monetary initiative that revolves around an in-kind exchange of recycled paper products against the quantities of various grades of paper collected from the institutions for the purpose of recycling. Please refer for detailed document in Annexure 2

a) Drive against single use plastic : Mask Collection Drive organized by EnactusKalindi

EnactusKalindi conducted a mask collection drive wherein we put up boxes in various areas across Delhi NCR to collect single use plastic masks that help to combat the surge in the biomedical waste generated during the pandemic. The collected masks were then sent to Mr Binish and his team who in turn cycled those masks to eco bricks.



(b) Zero waste initiative :

- Use of biodegradable/recyclable cups and plates in the canteen
- Promoting use of recycled papers for all the official works in the college
- Establishing more vermicomposting units
- Planning a solid waste management system
- Practicing method of waste segregation
- Setting up waste incinerator machines
- Establishing biogas plant
- Establishing a wastewater treatment plant. Reusing wastewater for toilet flushes after the proper treatment

Waste /management committee, Kalindi College, Delhi



Plate-01: Pictures of all wastes collected from all departments, office, library, cyber centre, Sangam Parisar

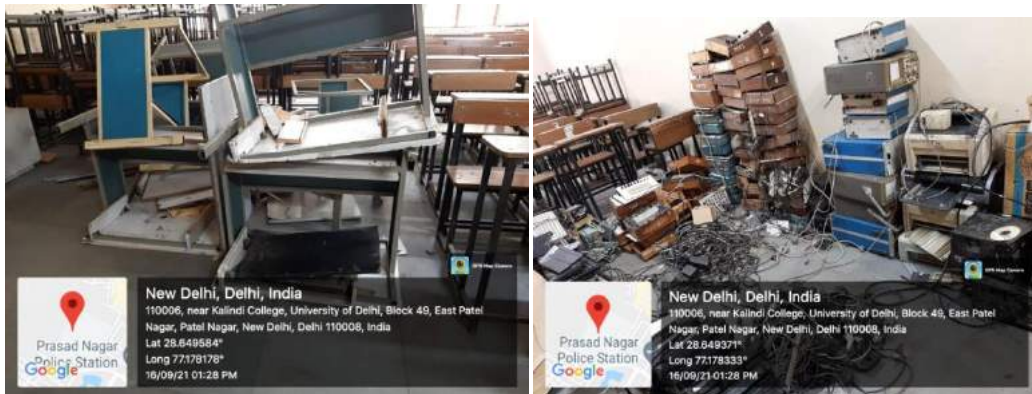
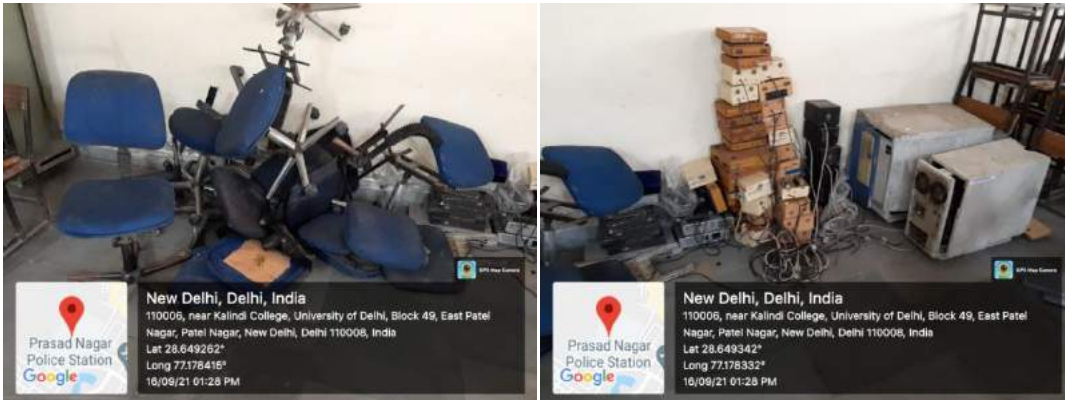


Plate-02: Pictures of all wastes collected from all departments, office, library, cyber centre, Sangam Parisar

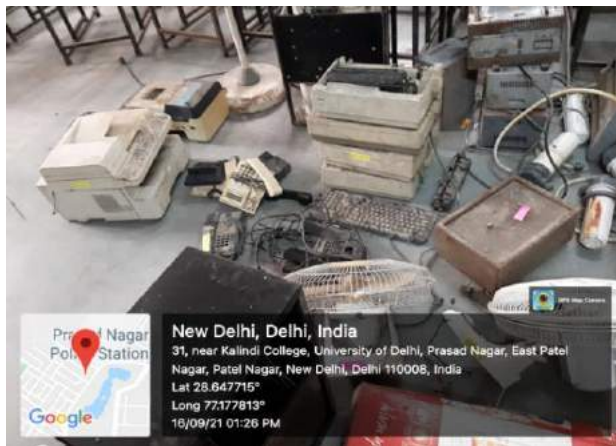
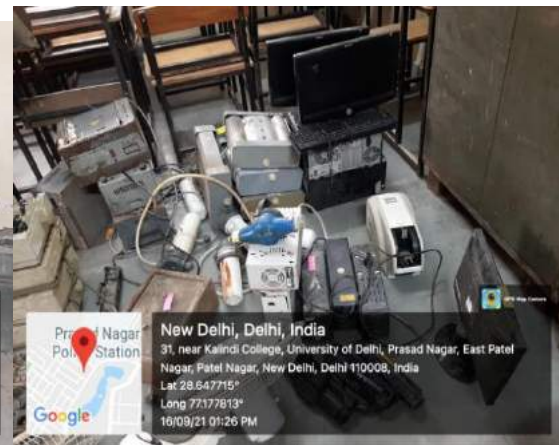
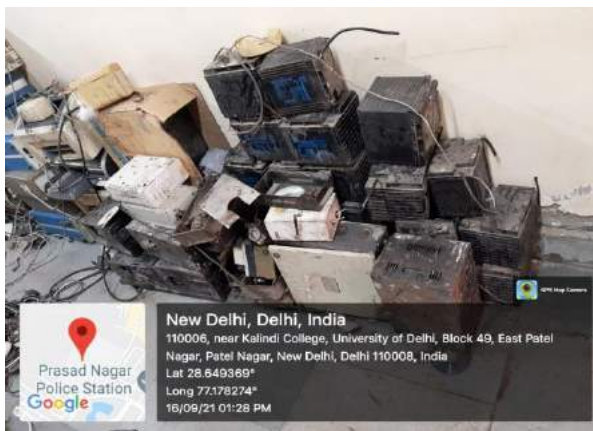
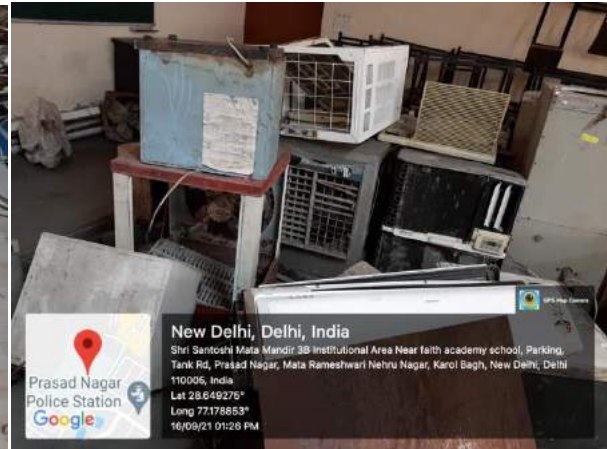
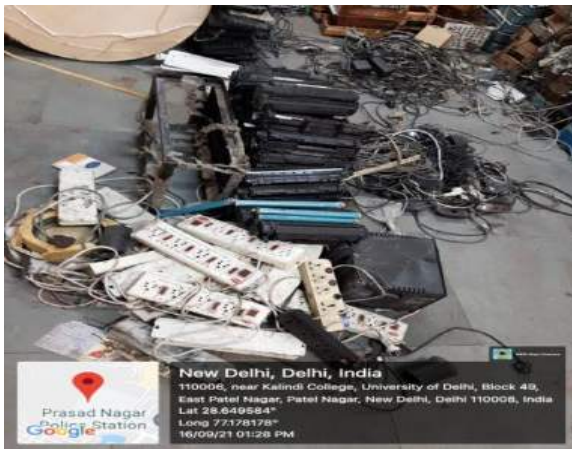


Plate-03: Pictures of all wastes collected from all departments, office, library, cyber centre, Sangam Parisar

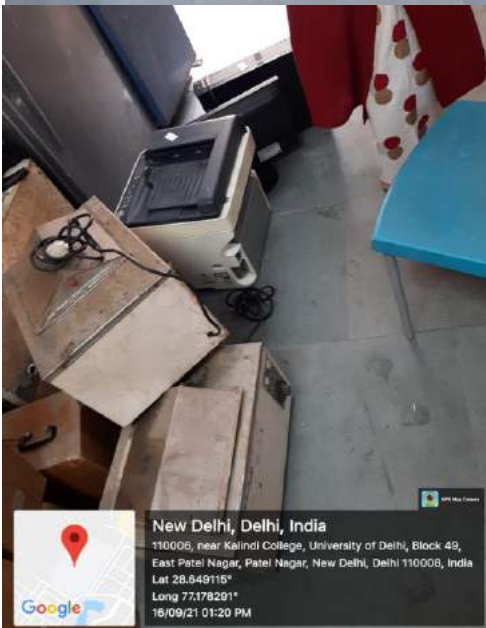
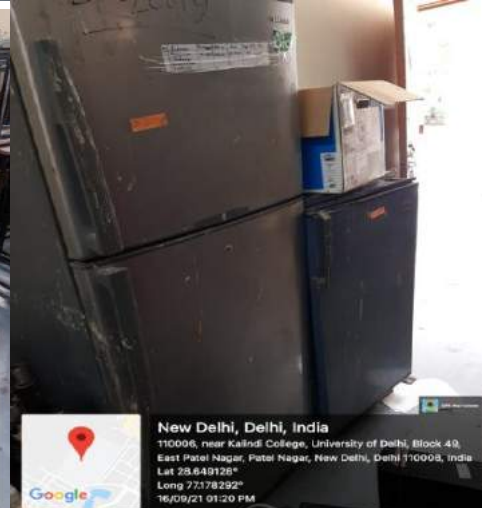
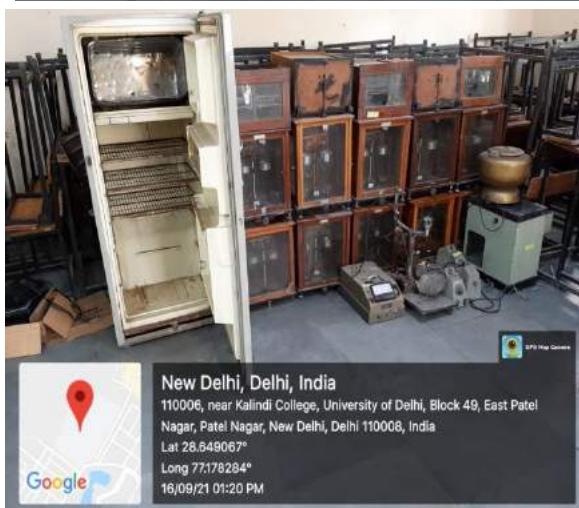


Plate-04: Pictures of all wastes collected from all departments, office, library, cyber centre, Sangam Parisar

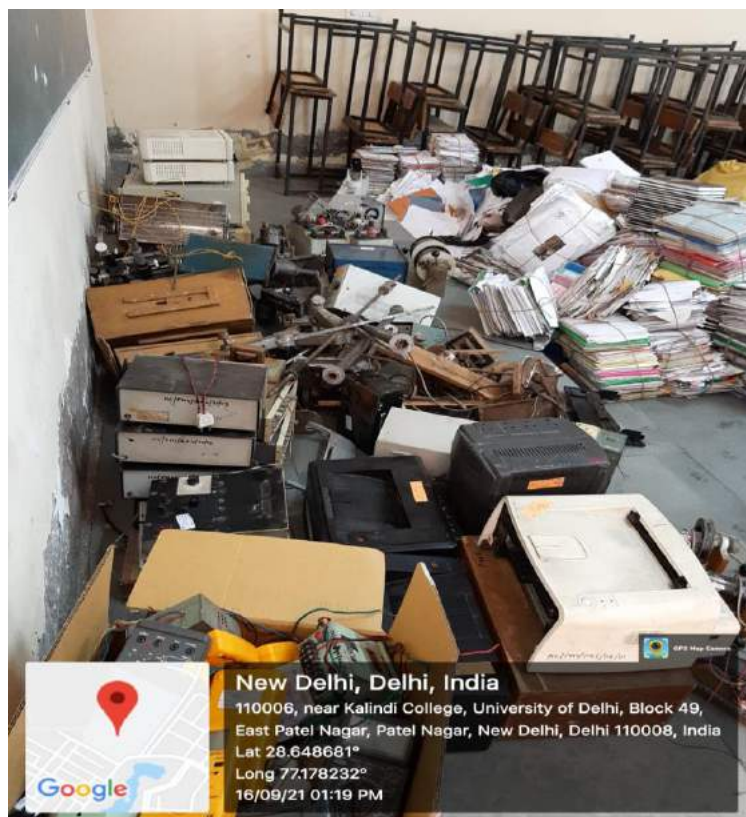


Plate-05: Pictures of all wastes collected from all departments, office, library, cyber centre, Sangam Parisar

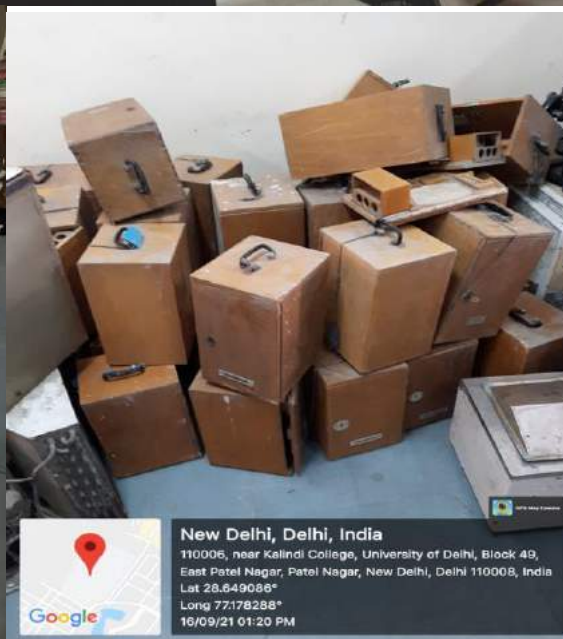
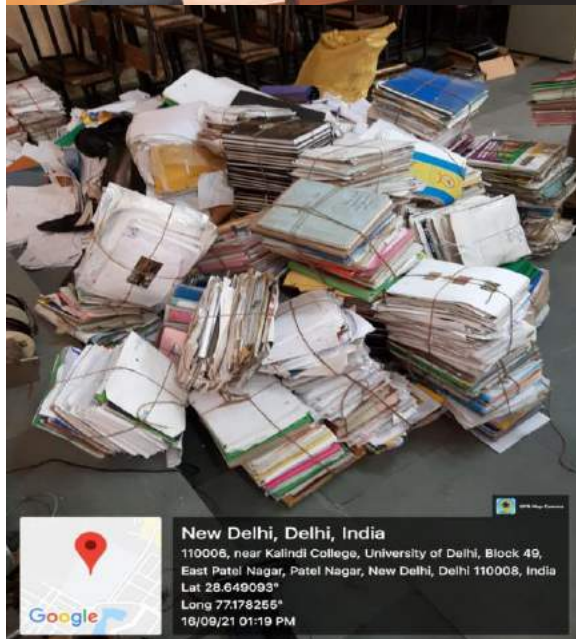
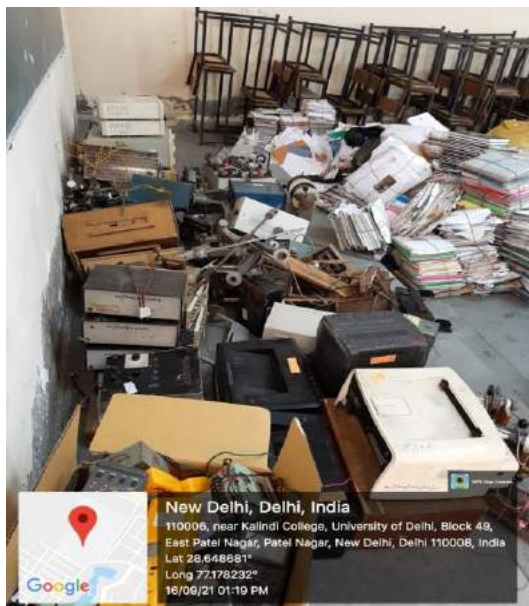
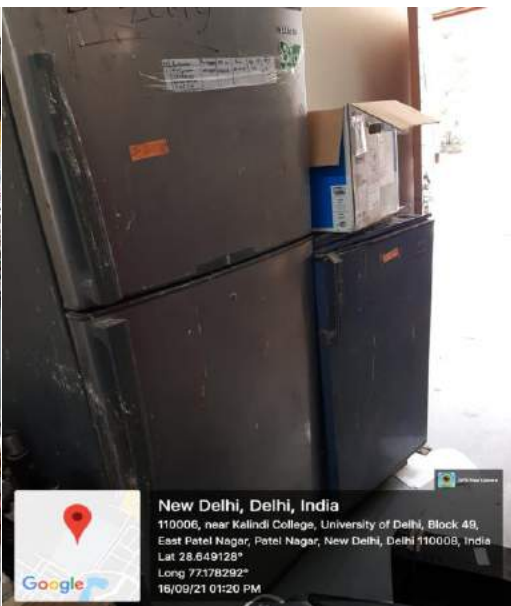


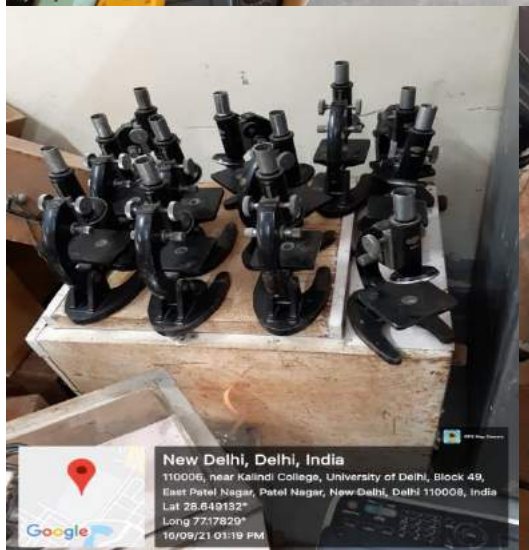
Plate-06: Pictures of all wastes collected from all departments, office, library, cyber centre, Sangam Parisar



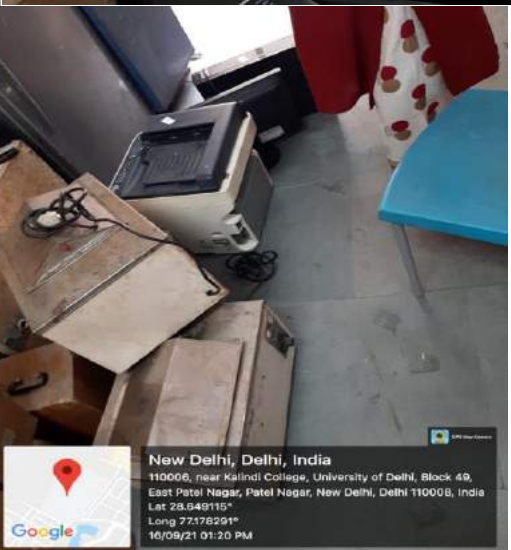
New Delhi, Delhi, India
 110006, near Kalindi College, University of Delhi, Block 49, East Patel Nagar, Patel Nagar, New Delhi, Delhi 110008, India
 Lat 28.648881°
 Long 77.178232°
 16/09/21 01:19 PM



New Delhi, Delhi, India
 110006, near Kalindi College, University of Delhi, Block 49, East Patel Nagar, Patel Nagar, New Delhi, Delhi 110008, India
 Lat 28.649128°
 Long 77.178292°
 16/09/21 01:20 PM



New Delhi, Delhi, India
 110006, near Kalindi College, University of Delhi, Block 49, East Patel Nagar, Patel Nagar, New Delhi, Delhi 110008, India
 Lat 28.649132°
 Long 77.17829°
 16/09/21 01:19 PM



New Delhi, Delhi, India
 110006, near Kalindi College, University of Delhi, Block 49, East Patel Nagar, Patel Nagar, New Delhi, Delhi 110008, India
 Lat 28.649115°
 Long 77.178291°
 16/09/21 01:20 PM



New Delhi, Delhi, India
 110006, near Kalindi College, University of Delhi, Block 49, East Patel Nagar, Patel Nagar, New Delhi, Delhi 110008, India
 Lat 28.649067°
 Long 77.178284°
 16/09/21 01:20 PM

Plate-07: Pictures of all wastes collected from all departments, office, library, cyber centre, Sangam Parisar

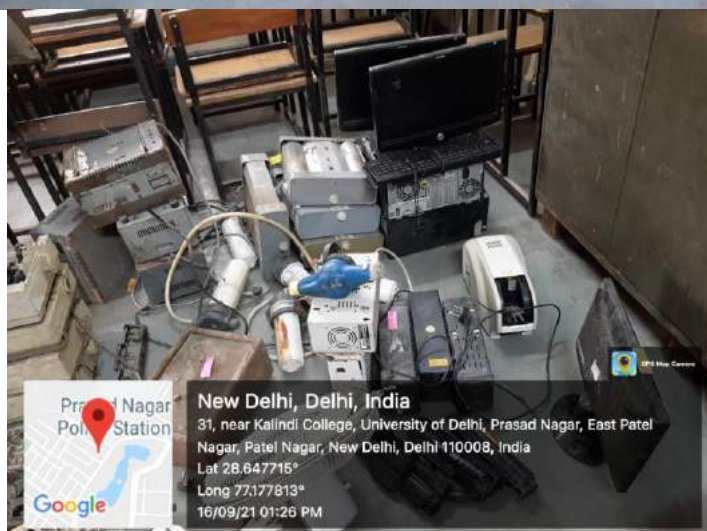


Plate-08: Pictures of all wastes collected from all departments, office, library, cyber centre, Sangam Parisar

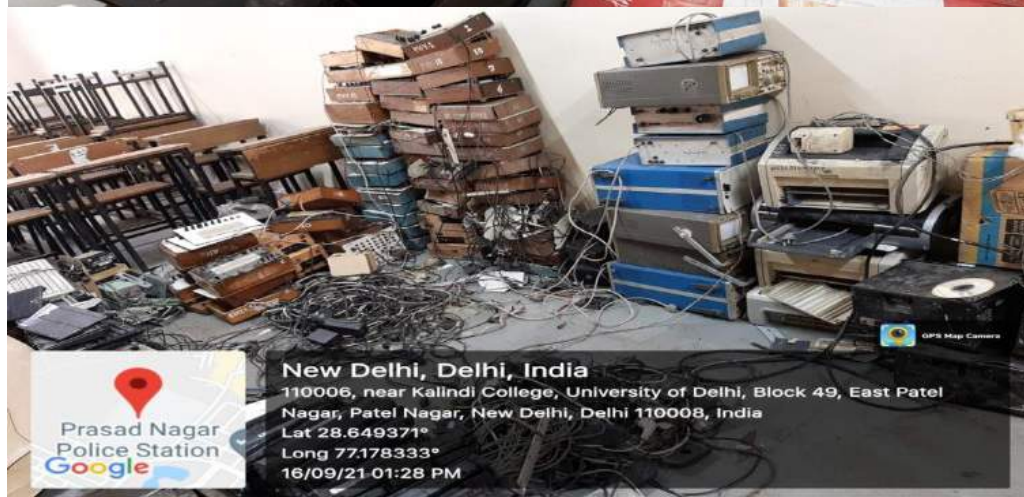


Plate-09: Pictures of all wastes collected from all departments, office, library, cyber centre, Sangam Parisar

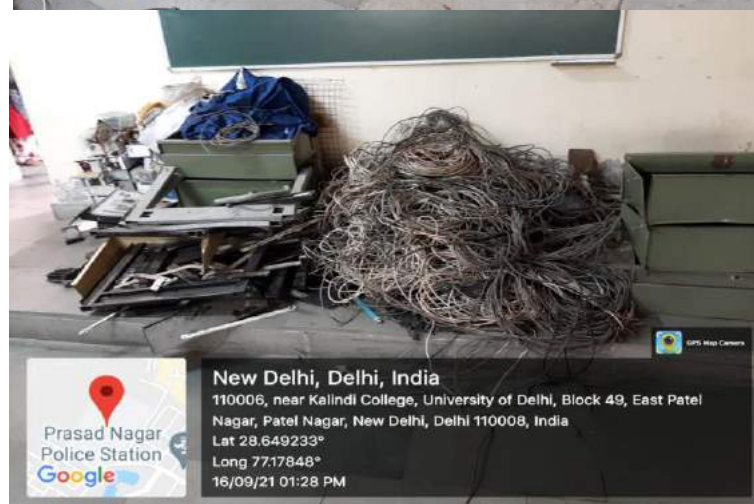
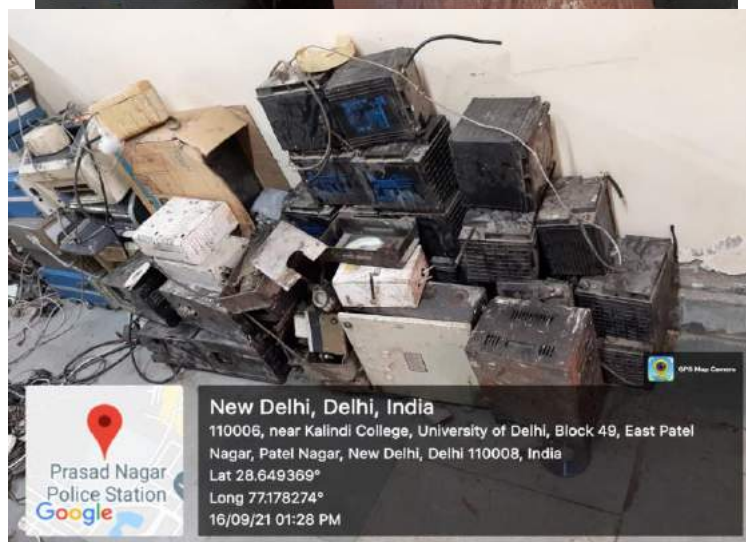
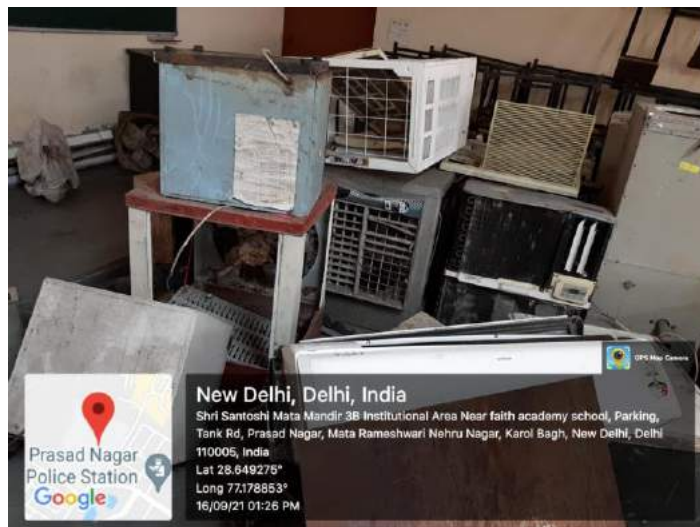


Plate-10: Pictures of all wastes collected from all departments, office, library, cyber centre, Sangam Parisar

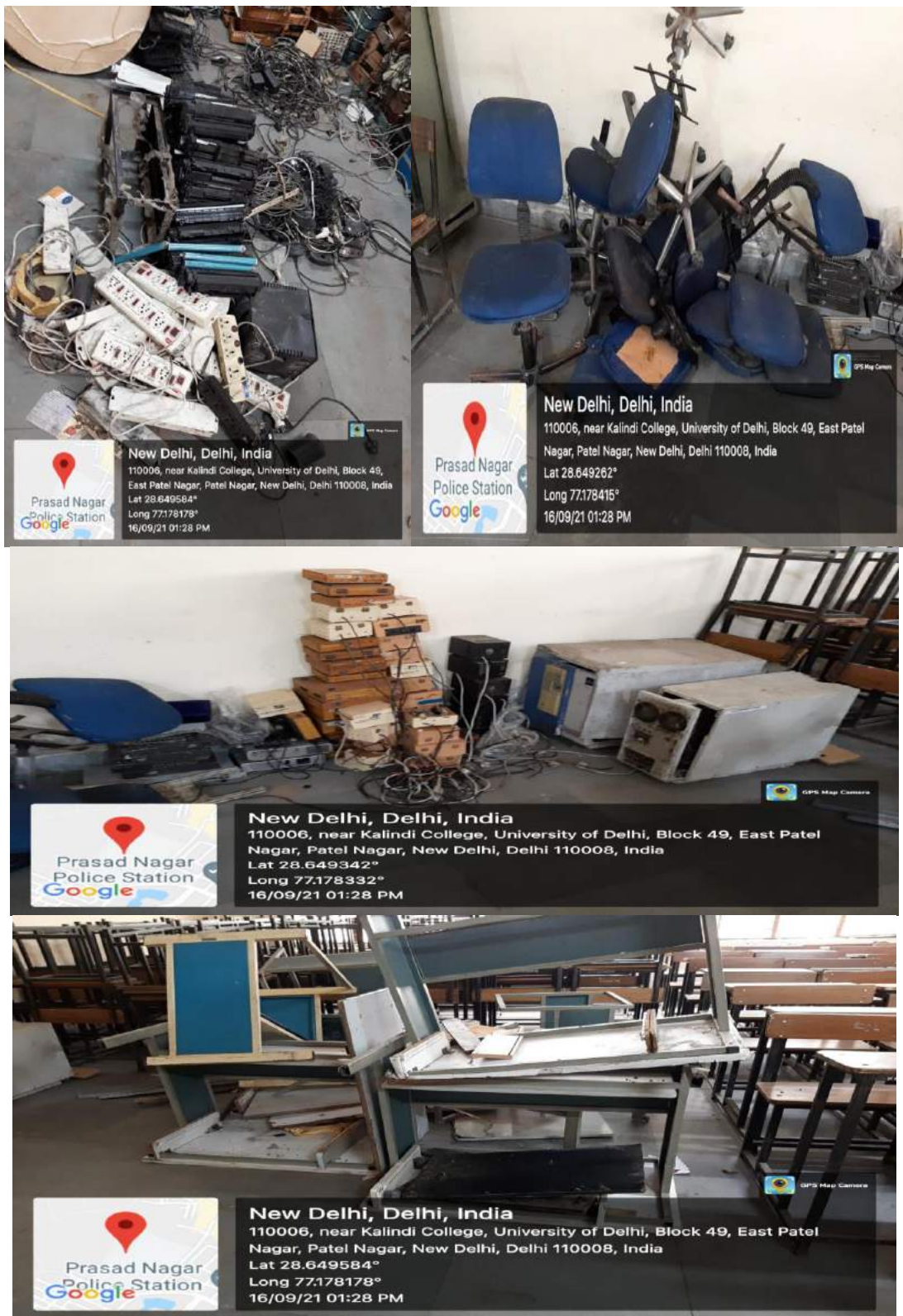


Plate-11: Pictures of all wastes collected from all departments, office, library, cyber centre, Sangam Parisar

Meeting with Consultant, Delhi University Store



Plate-12: Pictures of all wastes collected from all departments, office, library, cyber centre, Sangam Parisar



Plate-13: Pictures of all wastes collected from all departments, office, library, cyber centre, Sangam Parisar

Pictures of various vendors visited college premises for waste



Plate-14: Pictures of all wastes collected from all departments, office, library, cyber centre, Sangam Parisar



Plate-15: Pictures of all wastes collected from all departments, office, library, cyber centre, Sangam Parisar

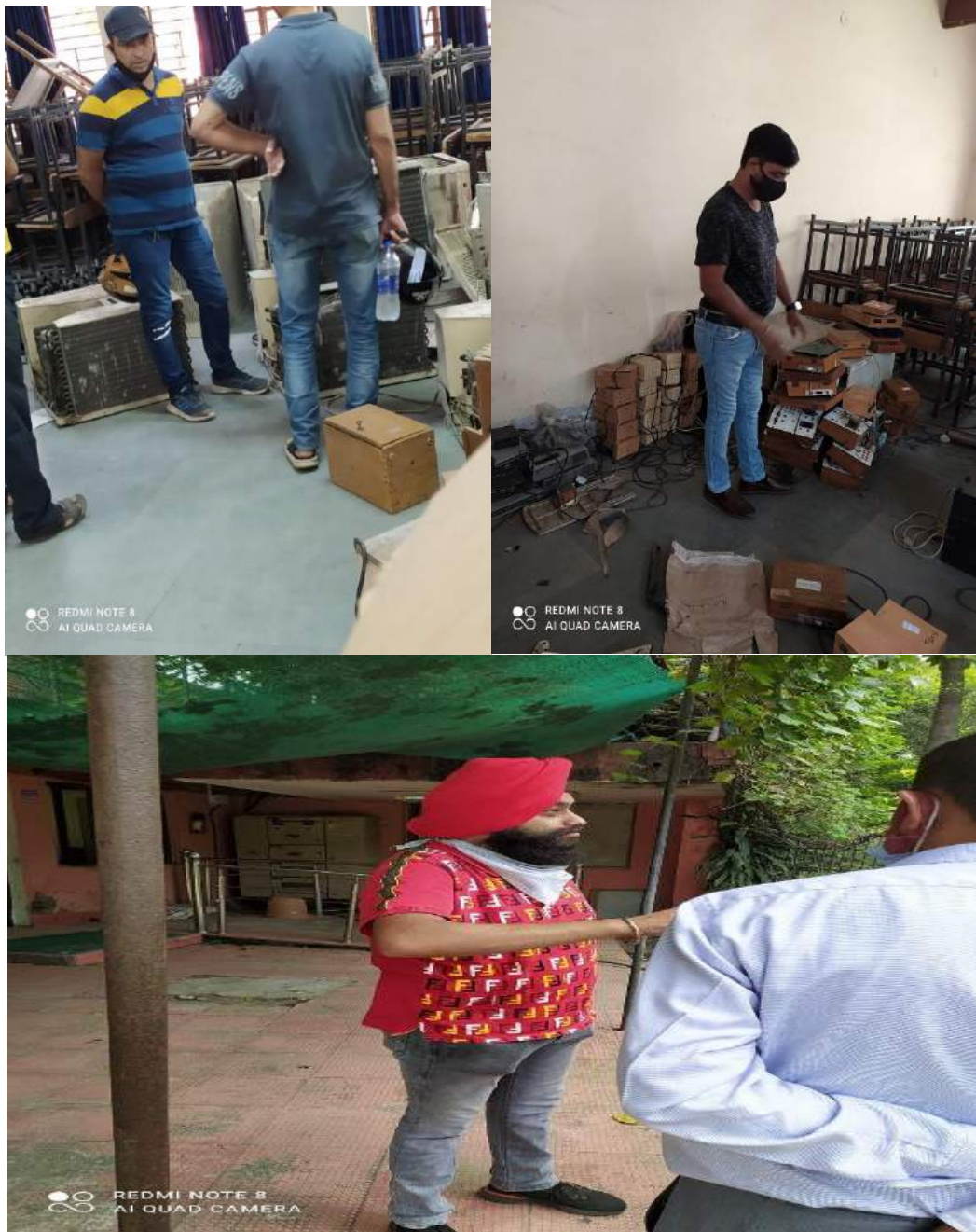


Plate-16: Pictures of all wastes collected from all departments, office, library, cyber centre, Sangam Parisar

Final Selected vendor list as per MSTC mail (portal)

Auction Period : 2021-10-12::11:00:00 — 2021-10-12::16:00:18
Currency : INR

Seller Name : KALINDI COLLEGE
Location : near Rajendra place jheel

Lot No.	Lot Name	Quantity	Status	Buyer	Rate	Mat.Value	ED	GST	Surcharge	TCS	Others	Total Payment	AI Issd.	DO Issd.
1.0	e-Waste, Electrical & obsolete Scientific Wastes	1.0 LOT	Sold	mstc/VASOO METALS/49817	431000.00	431000.00	0.0(0.0%)	21550.0(5.0%)	0.0(0.0%)	4526.0(1.0%)	0.0	457076.00	n	n
2.0	Iron ,Wooden & Misc. Scrap	1.0 LOT	Sold	mstc/Shal Traders/228047	90500.00	90500.00	0.0(0.0%)	16290.0(18.0%)	0.0(0.0%)	1068.0(1.0%)	0.0	107858.00	n	n
3.0	Raddi with Plastic	1.0 LOT	Sold	mstc/new india trading co/70259	25000.00	25000.00	0.0(0.0%)	1250.0(5.0%)	0.0(0.0%)	263.0(1.0%)	0.0	26513.00	n	n

TYPE	MATERIAL VALUE	SECURITY DEPOSIT	NO. OF ITEMS
SOLD	546500.00	54650.00	3
STA	0.00	0.00	0
TOTAL	546500.00	54650.00	3

Total no of Items Withdrawn :	0
Total no of Items rejected :	0
Total no of Nobid Items :	0
Total no of Items in the Auction :	3

Proof of initial payment received

MSTC LIMITED (A GOVT. OF INDIA ENTERPRISE)

mstc auction

Security Deposit Payment Status Check

Item : 4838261
Voucher Number : MSTC/Vno/963761
Admin UserID : manojd
Region : HRO

Sl No	Payment Mode	Cheque / DD No.	Cheque / DD Date	In Favour of	Amount	Bank
1478590	CBS	11000056981923	18-10-2021	MSTC LTD - EMD	2500	IndusInd Bank

Plate-17: Final Selected vendor list as per MSTC mail (portal)

MSTC LIMITED (A GOVT. OF INDIA ENTERPRISE)

Home About us Contact us Help www.mstcindia.co.in Change Logout

mstc auction

Security Deposit Payment Status Check

Item : 4838259

Voucher Number :MSTC/NRO/21-22/1773
Admin UserId :mstcnro
Region :NRO

Sl No	Payment Mode	Cheque / DD No.	Cheque / DD Date	In Favour of	Amount	Bank
1477524	RTGS	N280211676529399	16-10-2021	MSTC LTD - EMD	43100	IndusInd Bank

MSTC LIMITED (A GOVT. OF INDIA ENTERPRISE)

Home About us Contact us Help www.mstcindia.co.in Change Logout

mstc auction

Security Deposit Payment Status Check

Item : 4838260

Voucher Number :MSTC/NRO/21-22/1806
Admin UserId :mstcnro
Region :NRO

Sl No	Payment Mode	Cheque / DD No.	Cheque / DD Date	In Favour of	Amount	Bank
1479530	RTGS	JAKA211020887415	20-10-2021	MSTC LTD - EMD	9050	IndusInd Bank

Plate-18: Final Selected vendor list as per MSTC mail (portal)

Lifting of wastes from college by selected vendors

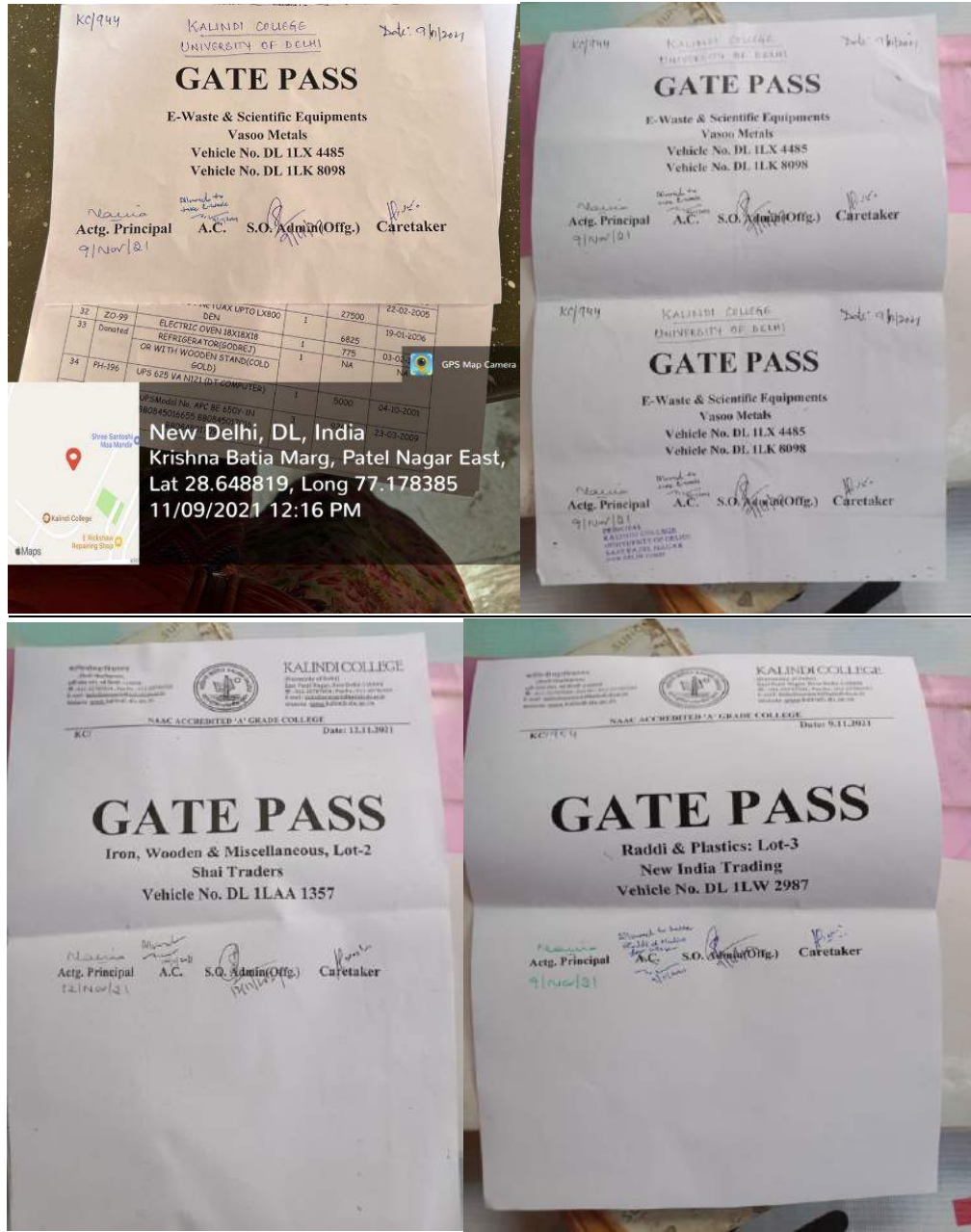


Plate-19: Final Selected vendor list as per MSTC mail (portal)



Plate-20: Final disposal of Waste through vendors



Plate-21: Final disposal of waste through vendors

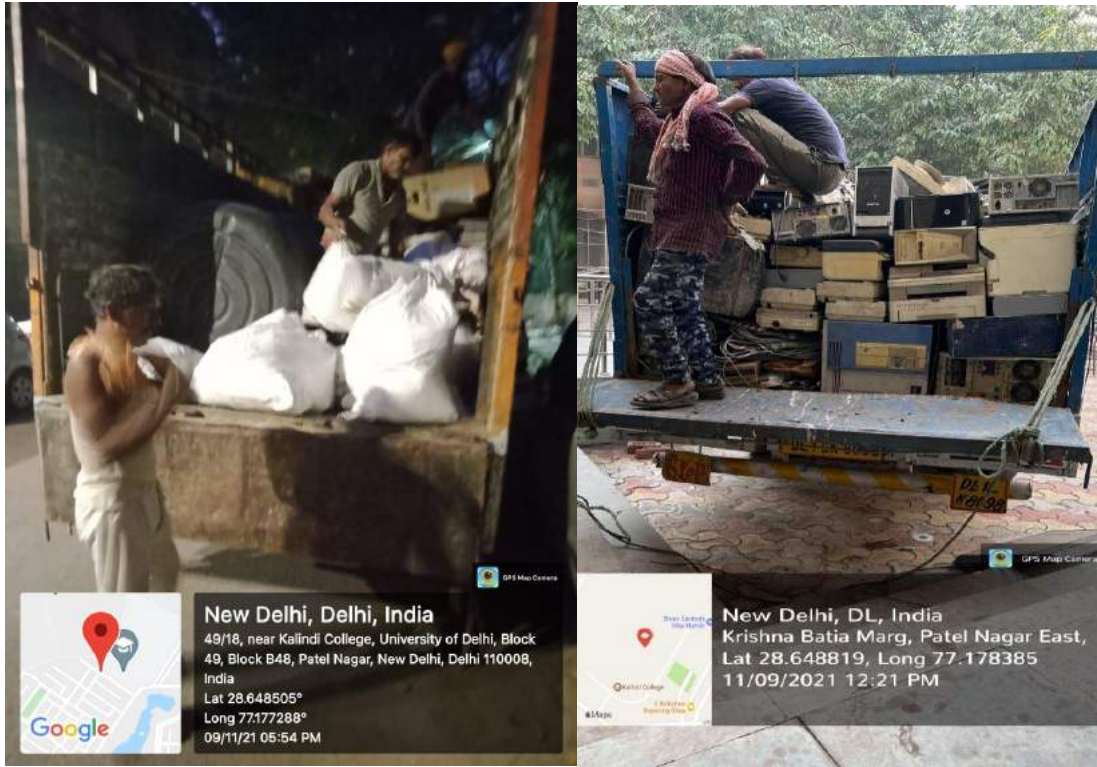


Plate-22: Final disposal of waste through vendors